

# Product Catalog

5 2 0 2

[WWW.ARMINMAKINA.COM](http://WWW.ARMINMAKINA.COM)



ARN METAL



THE STORY OF



ARN METAL



ARMİN MAKİNA MÜH. TARIM GİD. NAK. SAN. TİC. LTD. ŞTİ. started its operations in 2023 with the production of wire and nails.

Rapidly expanding its product range, the company began manufacturing steel mesh with dimensions of up to 6 meters in length and wire thicknesses ranging from 4 to 10 millimeters.

In the wire category, our product portfolio includes black drawn wire, reinforcement wire, binding wire, hay wire, and rod wire. For nails, we offer various types such as construction nails, shoe nails, insulation steel nails, and wire nails.

Focusing on export-oriented production and sales, our company is committed to maintaining consistent quality and aims to continuously increase its export capacity.





# Quality and Precision in Nail Production

At **ARN METAL**, we specialize in the production of high-quality nails designed to meet the diverse needs of various industries. Our range includes Construction Nails, Wire Nails, Insulation Nails, Spiral Nails, Coated Nails, and Wire-Threaded Nails. Each product is crafted with the latest technology and precision, ensuring that we provide the best solutions for our clients.

## **Custom Manufacturing and Packaging**

We understand that every project has unique requirements. That's why we offer customized nail production in any desired size and specification. Additionally, our nails can be packaged according to your specific needs, making it easy to meet the demands of your business or project.

## **Wide Range of Applications**

**ARN METAL** nails are trusted across multiple sectors for their durability and reliability. Whether you're working on construction, insulation, or other specialized projects, our nails are designed to deliver exceptional performance. Some of our key products include:

- Construction Nails: Ideal for all types of general construction and heavy-duty applications.
- Wire Nails: Versatile nails used in various woodworking and manufacturing processes.
- Insulation Nails: Specifically designed for insulation installation, providing strong and reliable fixation.
- Spiral Nails: Perfect for use in softwood and other applications requiring extra grip.
- Coated Nails: Resistant to corrosion, these nails are perfect for outdoor and long-lasting installations.
- Wire-Threaded Nails: Offered with the convenience of wire threading for bulk use, designed for high-efficiency applications.

## **Global Standards, Tailored Service**

Our nails are produced to meet international standards, ensuring they are suitable for both domestic and global markets. We also provide the flexibility to produce nails tailored to specific local needs and standards. With our export-ready certifications, **ARN METAL** nails are trusted by clients worldwide.

## **The ARN METAL Assurance**

Every nail we produce is designed to meet high-quality standards and ensure top-notch performance. With **ARN METAL**, you get not just high-quality products, but also reliable service and professional support to help you succeed in your projects.

Trust **ARN METAL** for all your nail needs. Custom production, flexible packaging, and global distribution are just a call away!

# NAIL GROUP



## CONSTRUCTION NAIL

Bulk nails are widely used in agriculture, construction, furniture production, and packaging. They serve to assemble wooden frames, secure structural elements, and fasten roof coverings. In furniture manufacturing, they are essential for high-quality assembly. Additionally, they are commonly used for installing door and window frames and assembling wooden packaging.

Produced in lengths ranging from 5 to 15 cm. The nail heads are designed with a checkered pattern to prevent hammer slips. For ease of transport, they are packaged in 25 kg cardboard boxes, wrapped in stretch film for reinforcement, and shipped on pallets.



## SHEATHING NAILS

Sheathing nails are primarily used in construction, particularly for securing sheathing materials such as plywood, OSB (oriented strand board), and other exterior panels to a building's framework. These nails are designed to provide a strong hold and prevent the sheathing from shifting or detaching. They are commonly used in roof, wall, and floor sheathing applications, providing a secure base for further construction or roofing materials. Additionally, sheathing nails are often used in framing and other structural applications where strong, durable fastening is required.

Custom sizes can be manufactured upon customer request.



AGRICULTURE



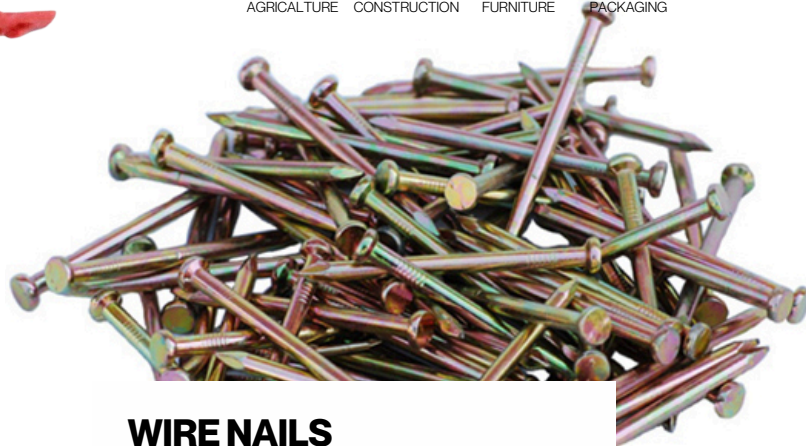
CONSTRUCTION



FURNITURE



PACKAGING



## WIRE NAILS

Wire nails are durable fasteners widely used in construction, furniture making, and repairs. Suitable for securing wood, plastic, and light metals, they come in various sizes to meet different needs.

Custom sizes can be manufactured upon customer request.



AGRICULTURE



CONSTRUCTION

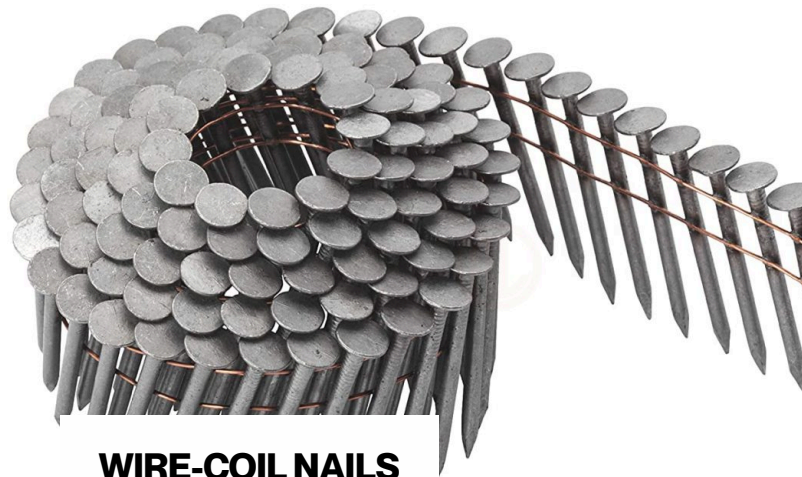


FURNITURE



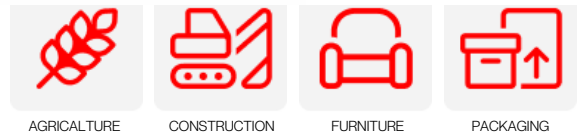
PACKAGING

# NAIL GROUP



## WIRE-COIL NAILS

Wire-coil nails are commonly used in construction, woodworking, and automatic nail-driving machines. They are typically preferred for securing materials such as wood, OSB (oriented strand board), plywood, and similar products. Wire-coil nails are used in various applications, including roofing, wall sheathing, flooring, and furniture manufacturing, to provide long-lasting durability. Additionally, they are ideal for high-efficiency automatic machines, enabling fast and effective assembly processes.



AGRICULTURE

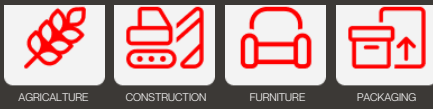
CONSTRUCTION

FURNITURE

PACKAGING



## TWIST NAIL



AGRICULTURE

CONSTRUCTION

FURNITURE

PACKAGING

Twist nails are specialized fasteners with a twisted shaft design, providing a strong and secure grip in a variety of materials, especially wood. The unique twist enhances holding power and reduces the likelihood of the nail loosening over time. These nails are commonly used in construction, furniture making, and applications where added strength and stability are required.



## COATED NAILS

The coating helps protect the nails from rust and ensures a longer lifespan, making them ideal for use in outdoor or moisture-prone environments. These nails are commonly used in construction, decking, and roofing applications. Phosphate coating, electro-galvanizing, and yellow passivation processes can be applied based on customer preferences.



AGRICULTURE

CONSTRUCTION

FURNITURE

PACKAGING



# ARN METAL

## Reliability and Quality in Wire Products

At **ARN METAL**, we provide the best solutions for a wide range of industries with our wire products. Our offerings include **Annealed Wire, Reinforcement Wire, Cotton Bale Wire, Black Wire, Galvanized Wire, Bright Wire, Wire Without Oxide, Steel Mesh, Oiled Bale Wire, and Rod Wire**, each manufactured with the highest production standards and cutting-edge technology.

### **Advanced Technology and Flexibility**

We continuously improve our quality standards by using the latest technology in our state-of-the-art production facilities. This enables us to offer products that are both durable and functional. With our customer-centric approach, we provide customized production to meet any specific requirements.

### **Wide Range of Applications**

**ARN METAL** wire products serve a variety of industries, offering reliable solutions across construction, agriculture, industrial applications, and export markets. For example:

- Annealed Wire and Reinforcement Wire: Ideal for reinforced concrete structures.
- Cotton Bale Wire and Oiled Bale Wire: Provides high strength for agricultural use.
- Galvanized and Bright Wires: Perfect for outdoor applications with excellent corrosion resistance.
- Steel Mesh and Rod Wire: Increases durability in construction projects.

### **Global Quality, Local Service**

Our products are trusted and used by customers both domestically and internationally. With certifications that meet global standards, we cater to the needs of countries around the world. Our export-oriented strategy enables us to successfully represent Turkey in the global market.

### **ARN METAL Guarantee**

Every product we manufacture is designed for long-lasting performance, ease of processing, and superior reliability. By partnering with us, you gain not only high-quality products but also a professional service experience and a trustworthy business relationship.



[WWW.ARMINMAKINA.COM](http://WWW.ARMINMAKINA.COM)

# WIRE GROUP

---



## ANNEALED WIRE

Annealed wire varies in characteristics depending on its intended use and application. It is commonly utilized in agricultural fields and offers the flexibility to be shaped as desired.

In the construction industry, it is known as "binding wire." Straight wire can be annealed either in batches or sequentially.

Annealed wire is produced in diameters ranging from 1.15 mm to 1.7 mm, with a coil diameter of 30 cm, packaged in 25 kg bundles.

---



## REINFORCEMENT WIRE

Primarily used as rebar tying wire in the construction industry, this product is also utilized in various sectors such as printing, waste recycling facilities, and packaging industries for bundling and securing different products.

Its flexible yet robust structure provides ease of use for our customers.

Reinforcement wire is produced in diameters ranging from 2.2 mm to 5 mm and is packaged in 30-35 kg bales.

---



## COTTON BALE WIRE

It is commonly used in cotton factories for baling cotton. The wires are adjusted to the desired length and shaped into loops, with the ends interlocking and bending to form a secure closure.

Customized production is offered to ensure the wires meet the required length and strength without breaking or snapping. We deliver our wires with a guarantee against breakage and at the minimum thickness needed to ensure cost efficiency during production.

---



## BLACK WIRE

Black wire is a versatile material widely used in construction, agriculture, and manufacturing. In construction, it is primarily utilized as binding wire for tying rebars and reinforcing concrete structures. In agriculture, it is used for fencing and bundling hay or crops. Its flexibility and durability make it ideal for crafting, packaging, and various industrial applications. Black wire is valued for its cost-effectiveness and reliability in both temporary and permanent solutions.

---



## GALVANIZED WIRE

Galvanized wire is widely used across various industries due to its corrosion resistance and durability. It is commonly utilized in agriculture for fencing, vineyard trellising, and plant support. In construction, it is used for binding and reinforcement purposes, while in the manufacturing sector, it is essential for producing nails, mesh, and wire ropes. Additionally, galvanized wire is popular in DIY and crafting projects, offering a versatile solution for numerous applications. Its long-lasting performance makes it a preferred choice for outdoor and heavy-duty use.

---

# WIRE GROUP

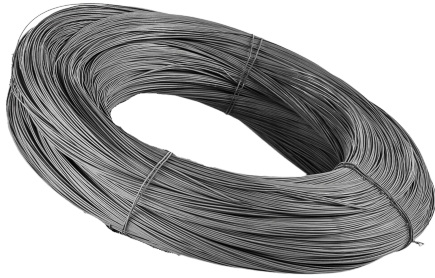
---



## **BRIGHT WIRE**

Bright wire is known for its smooth, shiny surface and is widely used in various industries. In construction, it serves as binding wire and is essential for reinforcing structures. It is also popular in the manufacturing of nails, hangers, and mesh products due to its clean finish and high strength. Additionally, bright wire is used in decorative applications, including crafting and artwork, where its polished appearance is an advantage. Its versatility and reliability make it suitable for both industrial and creative purposes.

---



## **NON-ANNEALED WIRE**

Annealed-free wire is commonly used in various industrial applications, including nail and wire rod production, due to its durability and adaptability. After the cold drawing process, it can be prepared in desired weights and diameters, ranging from 1.15 mm to 5 mm. Its strong structure makes it suitable for demanding applications where annealing is not required. This type of wire is especially favored for its cost-efficiency and reliability in manufacturing processes.

---



## **OILED BALE WIRE**

Oiled bale wire is a type of wire coated with a protective oil layer, making it highly resistant to rust and corrosion. It is primarily used in agriculture for baling hay, straw, and other materials, providing strength and flexibility for secure binding. The oil coating ensures smooth handling and prevents wire breakage during the baling process. Oiled bale wire is ideal for outdoor storage and transportation due to its durability in various weather conditions. It is widely used in farms and agricultural operations for efficient and reliable packaging.

---

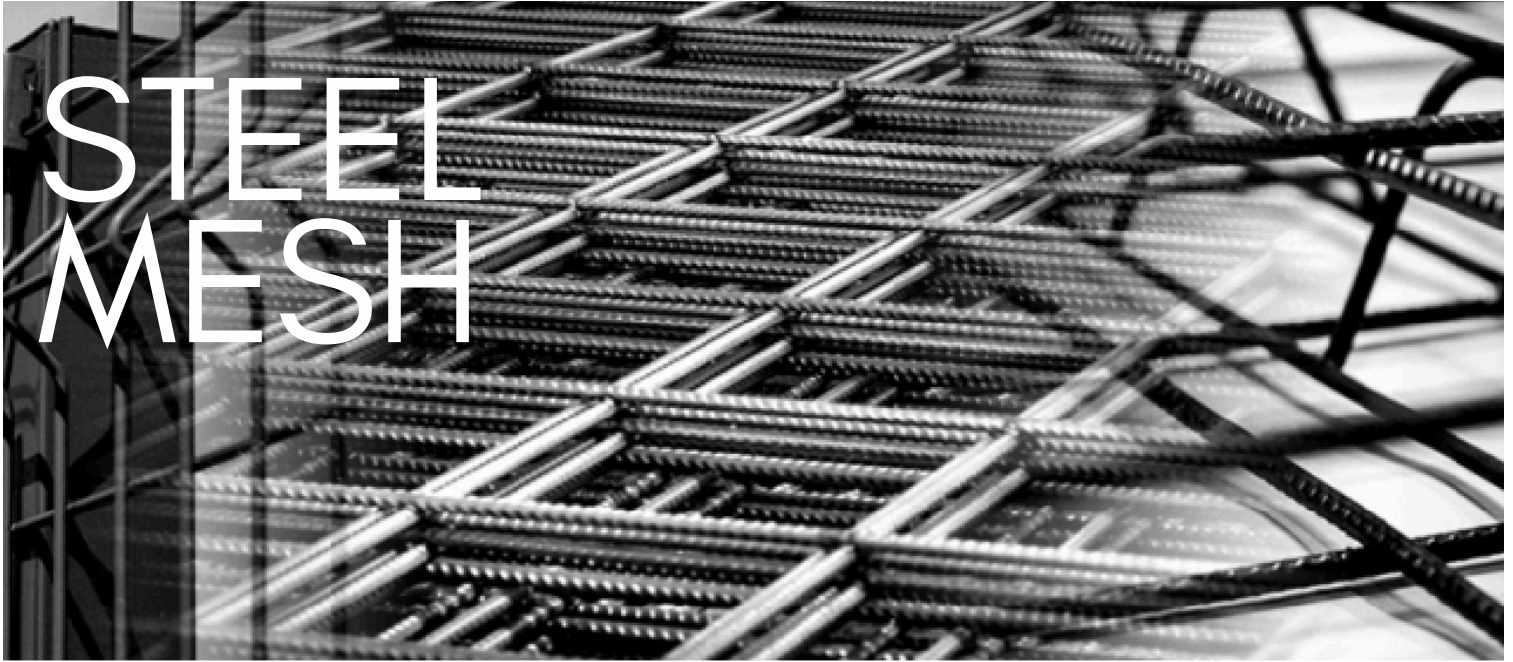


## **ROD WIRE**

Rod wire is a type of wire made from steel rods, offering high tensile strength and is commonly used for reinforcement purposes in construction. It is also used for manufacturing wire products like nails, mesh, and ropes due to its strong and flexible nature. Rod wire is available in various diameters and can be easily shaped or welded into different forms to meet specific project requirements. In addition to its construction applications, it is also used in the automotive and manufacturing industries for various structural and functional uses. Its versatility makes it a vital component in numerous industrial applications.

---

# STEEL MESH



## Applications of Steel Mesh

Steel mesh is widely used across various industries due to its durability, flexibility, and ease of application. Below are its primary application areas:

### 1. CONSTRUCTION SECTOR

- **Reinforced Concrete Structures:** Steel mesh is used to enhance the tensile strength of concrete in reinforced structures.
- **Floor Slabs:** Commonly applied in industrial and commercial flooring projects.
- **Tunnel and Bridge Construction:** Preferred for increasing durability in tunnels, bridges, and viaducts.
- **Prefabricated Structures:** Utilized in the production of precast concrete elements.

### 2. INFRASTRUCTURE PROJECTS

- **Road Construction:** Provides ground reinforcement for highways, under-asphalt concrete, and parking lots.
- **Dams and Reservoirs:** Prevents cracking and deformation in water structures.
- **Airport Runways:** Enhances durability in concrete surfaces.

### 3. INDUSTRIAL AREAS

- **Warehouses and Factory Floors:** Strengthens floors designed to bear heavy loads.
- **Ports and Docks:** Used in marine structures to increase concrete durability and provide corrosion protection.

### 4. Agriculture and Livestock

- **Greenhouse Structures:** Acts as a supportive element in greenhouse construction.
- **Fences and Cage Systems:** Used for building animal enclosures and fences in agricultural areas.

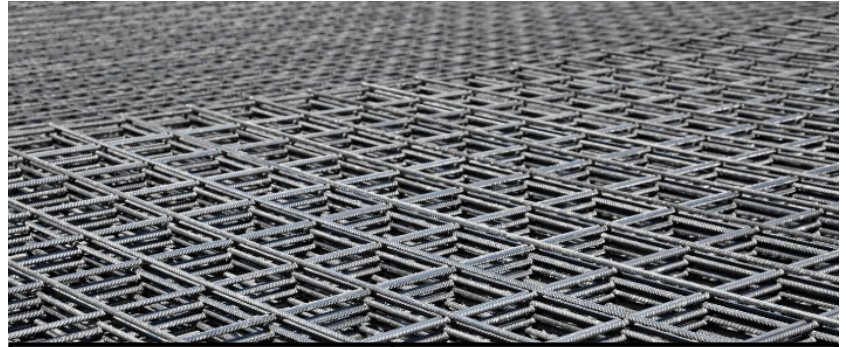
### 5. Other Applications

- **Decorative Structures:** Utilized in garden landscaping, wall claddings, and interior design for decorative purposes.
- **Mining:** Serves as ground and roof support in mining galleries.

Steel mesh offers a reliable solution across many sectors due to its strength and longevity. Its application areas can vary depending on the project.



# STEEL MESH



Feature	Specification
Wire Diameter	4.0 - 10.0 mm
Wire Surface	Ribbed, Smooth, or Hot-Dip Galvanized after Welding
Mesh Spacing (mm)	75 x 100 100 x 100 150 x 150 200 x 200 250 x 250
Mesh Dimensions	Width: 50 - 250 cm Length: 50 - 600 cm

Steel mesh is a high-strength concrete reinforcement material commonly used in construction. It is manufactured through a cold drawing process, ribbing, and electro-welding. The mesh is available in customizable dimensions, with widths ranging from 50 cm to 250 cm and lengths from 50 cm to 600 cm. Rod diameters can be specified between 4.0 mm and 10.0 mm based on project requirements.

Property	Value
Minimum Yield Strength	500 N/mm <sup>2</sup>
Minimum Tensile Strength	550 N/mm <sup>2</sup>
Minimum Elongation at Break	5-8%
Raw Material	SAE 1008, 1010 Quality Wire Rod

# CONTACT US

+90 537 334 28 62

+90 530 261 25 81

[www.arminmakina.com](http://www.arminmakina.com)

[export@arminmakina.com](mailto:export@arminmakina.com)

[info@arminmakina.com](mailto:info@arminmakina.com)

OSB Mahallesi 18. Cadde No:2/1  
Eğil/DİYARBAKIR



BUREAU  
VERITAS



# ARN METAL

